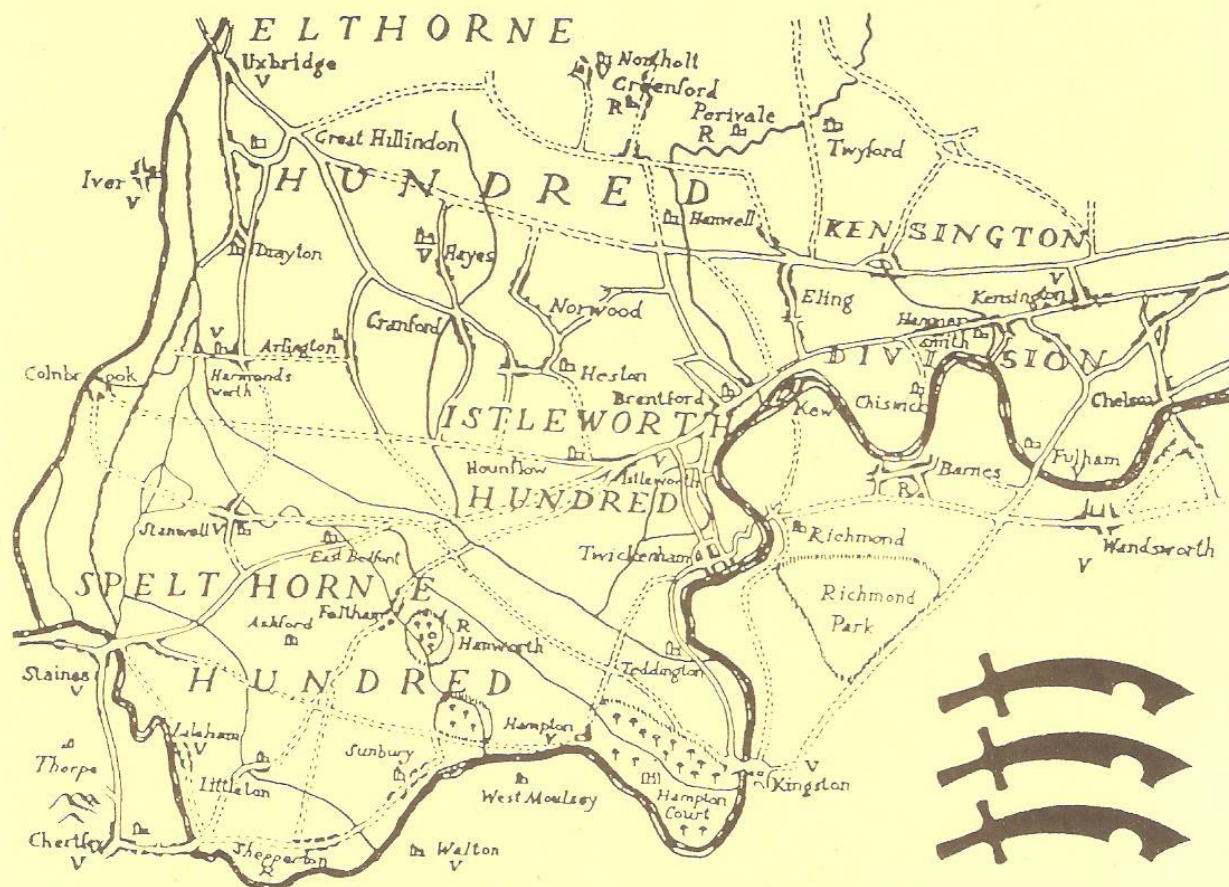


West Middlesex Family History Society Journal

ISSN 0142-517X

Vol. 14 No. 4

December 1996



WEST MIDDLESEX FAMILY HISTORY SOCIETY

Executive Committee

Chairman	Leslie Munson 41 Trotsworth Avenue, Virginia Water, Surrey GU25 4AN	
Secretary	Mrs Yvonne Woodbridge 92 Nelson Road, Whitton, Twickenham, Middlesex TW2 7AY	
Treasurer	Ms Muriel Sprott 1 Camellia Place, Whitton, Twickenham Middlesex TW2 7HZ	
Membership Secretary	Peter Roe 171 Fernside Avenue, Feltham Middlesex TW13 7BQ	
Editor	Richard Chapman 15 Willerton Lodge, Bridgewater Road, Weybridge Surrey KT13 0ED	
Publicity Officer	Antonia Davis 46 Roseville Road, Hayes, Middlesex UB3 4QX London W13 9QB	
Programme Secretary	Mrs Janet Hagger 9 Mandeville Road, Shepperton, Middlesex, TW17 0AL	
Committee Members	Jim Devine Joan Scrivener	David Neller Carol Sweetland
Subscriptions	Individual Membership Overseas Membership Family Membership Corporate Membership	£8.00 per annum £9.00 per annum £10.50 per annum £8.00 per annum
Subscription year	1 October to 30 September	
Bankers	Barclays Bank plc, Cardinal point, Newall Road, Hounslow TW6 2AH Branch Code 20-38-83 Account No. 50935263	
Hon. Auditors	Roger Minot and Gavin Mott	

In all correspondence please mark your envelope WMFHS in the upper left-hand corner; if a reply is needed, a SAE/IRCs must be enclosed. Members are asked to note that receipts are only sent by request, if return postage is included.

Published by West Middlesex Family History Society
Registered Charity No. 291906

WEST MIDDLESEX FAMILY HISTORY SOCIETY JOURNAL

Volume 14 Number 4

December 1996

Contents

From the Secretary's Desk	2
Future Meetings	3
Annual General Meeting Agenda	3
News Roundup	4
Network 11 Tape Library	6
Notes from the Committee	7
The Middlesex County Show	9
St Catherine's House Courier Service	10
Good-bye Peggy	13
Help!	20
The Census and Census Indexes	21
The Value of Seeking Out Places of Burial	26
Society Publications on Microfiche	30
Bookshelf	31
Library Update	34
New Members	36
Surname Interests	37
Indexes Held by Members	40

© West Middlesex Family History Society and contributors 1996.

No part of this publication may be reproduced in any form or by any means without permission. Articles in this journal do not necessarily reflect the opinions of the Editor and the Executive Committee. The Society cannot vouch for the accuracy of offers of services or goods that may appear.

All articles and other items for the Journal should be sent to:

Richard Chapman, 15 Willerton Lodge, Bridgewater Road,
Weybridge, Surrey KT13 0ED

Exchange journals from other societies should be sent to:

Mrs Mavis Sibley 13 Blossom Way, West Drayton, Middlesex UB7 9HF

Queries concerning non-delivery or faulty copies of this Journal should be sent to:

Peter Roe, 171 Fernside Avenue, Feltham, Middlesex TW13 7BQ

In the last Journal there were re-quests for both an Assistant Secretary and an Assistant Editor, since both the current post-holders will stand down in 1997. Unfortunately, as I am not good at delegation. some of the jobs I do are not part of the duties of secretary. The Federation produces a guide to the post, but my copy was borrowed and I cannot remember whether it was returned! So my own definition of a family history society secretary's duties is:

- Dealing with correspondence
- Arranging committee meetings
- Booking hall for meetings
- Ensuring that information is passed on the correct person
- Monitoring the work of the Society
- Maintaining a filing system (it always lets you down at the wrong moment!)

A good memory also helps, although I have managed quite well without one! If anyone is interested, a search will be made for the missing guide - it is not missing, only mislaid (an old Civil Service saying).

Elsewhere in this issue you will find a review of the new Green School book. Our member, Wendy Mott, was chairman of a committee to arrange the celebrations of her old school's 200th anniversary. She also researched, wrote, and produced this book - I never know how she manages to fit all her projects in!

Buckinghamshire FI-IS had the excellent idea of inviting neighbouring societies to attend a group meeting in October. Our representatives were Muriel Sprott and myself, while other societies attending were those of Berkshire, Hampshire, Hiliingdon, London and North Midcclsex, Sussex and West Surrey. The morning discussion was on the Internet. Here, your representatives learnt a great deal, but have yet to be 'sold' on surfing the 'Net. During the lunch break, Bucks.' 1851 census, marriage and wills databases were on display. After lunch, views were exchanged on publishing and on motivating members. All the societies were in favour of meeting again next year. Bucks. FHS has kindly agreed to host it; afterwards each society will take a turn in organising the event.

Oh dear, by the time you receive this issue, Christmas will be looming; so may I take this opportunity to wish you the best seasonal greetings and a peaceful and contented 1997.

PRO News

The census and PCC microfilm material will remain accessible at Chancery Lane until the end of January 1997, but the rest of the building will be closed from 6 December 1996. if you wish to see documents which were formerly housed there, ring 0181-3925200 to check when they will be available at Kew.

FUTURE MEETINGS

The following meetings have been planned:

19 December	<i>Annual General Meeting, plus 'A Christmas I would rather forget...'</i>
16 January 1997	<i>Seeing It Through Their Eyes</i> A talk by Michael Gandy, on what our ancestors' lives were like.
20 February	<i>Members' Evening</i>
20 March	<i>Food and Cookery Through the Ages</i> A talk by Lilian Gibbens

The meetings are held on the third Thursday of each month, at Montague Hall, Montague Road, Hounslow, and start at 7.30 p.m. There will also be *Research Evenings* on 5 December and 6 February 1997 at 7.30 p.m., at the same venue, when many of the Society's records will be available for consultation.

ANNUAL GENERAL MEETING 1996: NOTICE OF AGENDA

The Annual General Meeting of the West Middlesex Family History Society will be held at 8.00 pm. on Thursday 19 December 1996, at Montague Hall, Montague Road, Hounslow. The agenda for this meeting is as follows;

1. Apologies for absence
2. Approval of the minutes of 1995 AGM
3. To receive and approve the audited accounts for the year ending 30 September 1996
4. Appointment of two auditors
5. Report by the Chairman
6. Elections of Officers and Committee for year 1997
7. Any other business

Elections

Carol Sweetland is standing down, having served for six years on the committee. The following members of the committee, having served three or more years, offer themselves for re-election: Richard Chapman, Antonia Davis, Janet Hagger, Yvonne Woodbridge.

The following members will continue to serve, but do not need to be re-elected, as they have served less than three years in one continuous spell on the committee; Jim Devine, Les Munson, David Neller, Peter Roe, Joan Scrivener, Muriel Sprott.

NEWS ROUNDUP

At Home with the GLRO

During 1997, family history societies wanting to discover the wealth of material held by the Greater London Record Office (GLRO) are welcome to take part in one of their 'at home' sessions. They last for approximately 1½ hours. During that time staff will introduce you to the working of the office and to some of the sources there. There will be plenty of opportunity to ask questions and see the Search Room in action. We have chosen Thursday 20 March 1997, 2.30 to 4.00 p.m. If you would like to attend please let Yvonne Woodbridge, 92 Nelson Road, Whitton, Twickenham, Middlesex TW2 7AY (0181-898-2308) as soon as possible to allow plenty of time for confirmation.

If you prefer one of the following dates, please apply directly to Greater London Record Office, 40 Northampton Road, London EC1R 0HB: 21 January, 6.00-7.30 p.m.; 23 September, 6.00-7.30 p.m.; 20 November, 2.30-4.00 p.m.

Gas Industry Genealogical Index

The 1996 fiche edition of this index covering people in or associated with the gas industry in Britain and Ireland (and British-owned companies overseas) from c.1800-1949 is now available. Entries give name, occupation and place, date of the event, source, date and reference. The cost is £35 + p&p, with additional copies purchased at the same time charged at £20 per set. p&p for UK and Europe £1 + 20p for each additional set; overseas mail £2 + £1 for each additional set; overseas surface mail £1.20 + 35p for each additional set. Payment by Sterling cheque with order, to David Loversed, 48 Flowery Field, Woodsmoor, Stockport SK2 7ED.

Midlands Family History Fair

The Leicestershire and Rutland FHS will be hosting the first Midlands Family History Fair on Saturday 12 April 1997, at De Montfort Hall, Leicester, from 10.00 a.m. to 4.30 p.m. A large number of societies and other organisations will be attending. Admission £1.50.

Guild of One-Name Studies

A regional seminar will be held on Saturday 25 January 1997 at The Methodist Church Hall, Spital Street, Dartford, Kent. Send £5 registration fee with a SAE to Peter Goodall, Conference Organiser, 3 Dixey's Cottages, Great North Road, London N2 0NS. The closing date for applications is 31 December 1996.

Sussex Family History Group / FFHS Conference

On 4-6 April 1997, Sussex Family History Group will be holding its 25th Anniversary Conference, entitled Sussex by the Sea, at Bishop Otter College, Chichester. This will coincide with the AGM and Council Meeting of the FFHS. Contact: Mrs D. Hayes, 31 Poulter's Lane, Worthing, West Sussex BN14 7SS.

Eighth British Family History Conference

The Federation of Family History Societies announces the Eighth British Family History Conference *Faith, Hope and Charity*, to be held at Askham Bryan College, York, from Wednesday 3rd to Sunday 7th September 1997. Details are available from The Joint Conference Organisers (c/o Pauline Litton and Pauline Saul), c/o 2 Florence Road, Harrogate, North Yorkshire HG2 0LD.

More PRO News

The first batch of service records for men who served in the British Army during the First World War were opened to the public at the PRO (Kew) on 11 November. These are for ordinary and non-commissioned officers. Records for approximately 8-10% of men are accessible on microfilm, the original documents being too fragile ever to be made available.

Around 60% of the soldiers' documents were destroyed during the Blitz. The remainder will be coming to the PRO over the next few years, and Lottery funds have been secured for a pilot project to film these. There are 1½ miles of documents and many were badly damaged by fire and water. It is hoped to complete filming by the end of 2001. Meantime, the MoD will continue to carry out paid searches (£20) from Hayes.

The PRO will be publishing a new Readers Guide, *Army Service Records: a guide to sources at the PRO*, by Simon Fowler, William Spencer and Stuart Tamblin. This will provide a simple introduction to the new records, as well as other relevant records at the PRO.

(Information supplied by Simon Fowler, Publicity and Exhibitions Manager, PRO)

The December Journal? What a Surprise!

Receiving the December Journal may come as a surprise to quite a lot of our regular readers. Firstly, it will to the small percentage of members each year, who do not renew their membership. These are the people who feel they have come to the end of their research in Middlesex and now wish to move on. We thank them for their support in the past and wish them happy hunting in their new area of research. Secondly, it will to those members who have intended to renew, yet have still not bothered to do so. The renewal form, provided three months ago in the September issue, is still behind the clock waiting to be filled in. As they would have missed the regular bulk mailing date, their journal would have to be posted to them individually. That's another job to be done! To save our volunteers this extra work, it has been decided to provide the December journal to all of last year's members, whether or not they have renewed. This will be a good-bye present to those who are leaving us. Also, hopefully, it will be a reminder to those who have still not renewed, to do so as soon as possible. Finally, I would like to thank the majority of our members who have not only renewed, but also took the trouble to do so before October 1st.

Peter Roe, Membership Secretary

Recent additions to our recordings are as follows:

Military Ancestors - Peter Boyden

The Times Divorce index - Annie Weare

These tapes may be hired, at the cost of £1.60, including p&p, for 14 days.

Please make all cheques payable to *West Middlesex FHS*. Please give your name, address and telephone number, and your FHS and membership number (UK members only). Send your requests to: West Middlesex FHS Tape Library, 18A Gordon Road, Ashford, Middlesex TW15 3EU.

Updates from other societies in the network follow below. Rates and details required are as above, with cheques made payable to the appropriate society.

Woolwich and District FHS

Greenwich - Barbara Ludlow

Dr Williams Library - Alan Ruston

Poor Law Records - Peter Park

North Woolwich - Alan Godfrey

Researching Huguenot Records - Sue Heighly

Available from Woolwich and District FHS Tape Library, 129 Yorkland Avenue, Welling, Kent DA16 2LQ.

North West Kent FHS

The Origins and Early History of the Music Hall - Dick Playle

The East End Furniture Trade 1840-1940 - David Dewing

For the Price of a Stamp - Marion Blackpool

I-low to Use the PRO Kew and the Salt Lake City Library - Joyce Hoad

Resources at the Society of Genealogists Library, London - Sue Gibbons

The Breadwinner - Meryl Catty

Family History and the Theatre - Alan Ruston

Welsh Ancestry - Mari Alderman

The History and Setting Up of the NWKFHS Housegroups - Stella Szachnowski

Discovering Westerham - Alan Taylor-Smith

What's in the Parish Chest? - Richard Ratcliffe

The Workhouse - Judith Kinnison Bourke

Boats and Boaters - Canals - Avril Lansdell

Mercenaries 1828-1871 - Peter Boyden

Fraudulent Registrations in the 1840s - Peter Park

Brewing in Kent - Ken Smith

Salvation Army - Family Tracing - D. Jarrett

Available from North West Kent FHS Tape Library, 33 Orchard Way, Shirley, Croydon CRO 7NP.

Editor

You are reading the twentieth issue of the West Middlesex Family History Society Journal to have been prepared by the present editor; there will be another four before his replacement takes over (see overleaf).

Among the tasks undertaken by members of the committee, that of the editor is probably one of the simplest to describe; since the '70s when most British family history societies came into existence, the purpose, content and character of society journals has become well established. While there should always be scope for innovation, the basic formula is clear - indeed, the FFHS even produces guidelines on the subject. Regarding the day-to-day issues that are of concern to the Editor, I can only refer readers to the jottings included in *Editor's Notes* over recent years. The practical duties include requesting, receiving and assessing material for possible inclusion in the journal, typing or uploading it onto computer, arranging the material and normalising presentation (I now use a standard template with all styles, typefaces etc. pre-defined), correcting errors and re-working text, if appropriate. Other aspects relate to dealing with surname interests submitted by new members, gathering information from committee members (and others) to be brought to the attention of members, corresponding with contributors of articles, advertisers, copyright authorities etc. Final steps are liaising with the printers, delivering the copy and collecting the finished journals.

The essential tools of the job are a PC or similar, with a suitable word processing program (I *still* use *Word for Windows*TM 2.0), a good quality printer, a selection of reference books and a red pen.

Committee Meetings

Among the matters agreed during discussions at recent committee meetings are the following:

- A CD-ROM from the Open University containing reports on community and family history will be purchased.
- A facsimile publication of the 1888 Post Office London Directory will be purchased.
- Microfiche of the 1891 census returns for the West Middlesex area will be purchased from the PRO.
- The list of members who hold microfiche and other equipment on behalf of the Society is to be updated.
- Separate research evenings will be discontinued from February 1997. In future, research will form part of our regular members' evenings.
- Janet Haggard will act as vice-chairman.
- A questionnaire will be circulated to elicit views of the membership on meetings and participation in other society activities.

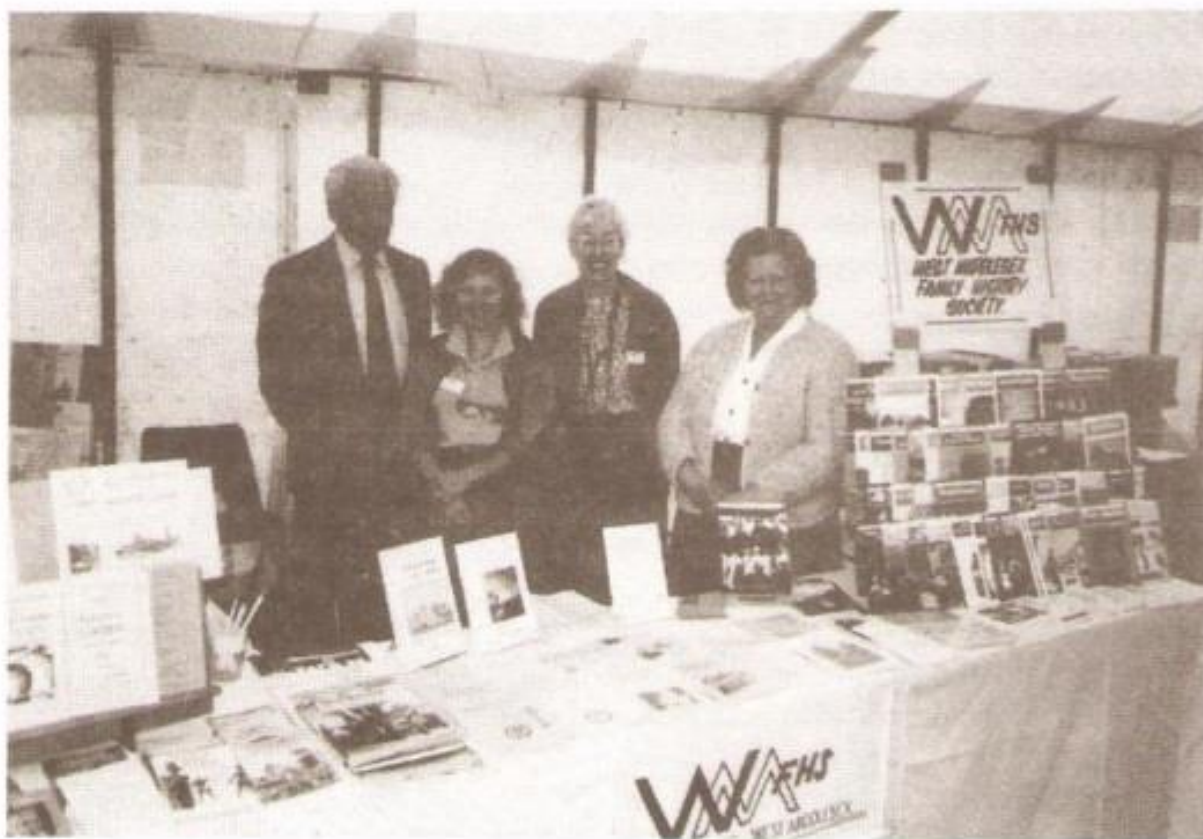
Job Opportunities

As was mentioned in the last issue of this journal, the Society will be in the position of needing a new Secretary and a new Editor at the end of 1997. It is essential that we find replacements to occupy these posts, since without them the Society as we know it cannot function. Furthermore, in order to ensure a smooth hand-over of responsibilities, it would be useful if potential replacements have served on the Committee for a time alongside the present post-holders. With this in mind, if you might be interested in either of these posts, do make yourself known to one of the current committee.

Richard Chapman

Surrey Parish Register Transcriptions and indexes on Microfiche

Forty parishes, mainly in western Surrey, have now been published on microfiche by West Surrey FHS. Each comes with a descriptive booklet, which includes a map showing the position of the parish, and an illustration of the parish church. A list of the parishes covered is available on request, with SAE, from Mrs R. Cleaver, 17 Lane End Drive, Knaphill, Woking, Surrey GU21 2QQ.



WMFHS at the Middlesex County Show
Left to right: Les Munson, Toni Davis, Yvonne Woodbridge, Jill Munson

On the weekend of the 22-23 June 1996 our society took part in the 71st Middlesex County Show. This year Hillingdon FHS organised a marquee for use as the Middlesex History Centre. Several family history societies, as well as the Rotary Club, the SoG, Friends of the County of Middlesex and local history societies had stalls in the marquee; it was rather like a mini SoG Fair. Les and Jill Munson manned the stall for us on both days, with several members of the committee popping in to lend a hand (see photograph opposite) and giving them a chance to see some of the events taking place outside in the arenas. This is the first year in which a whole marquee has been devoted to history. It seemed very popular with the general public as well as the society stall holders and will probably grow into a regular event.

We picked up a few new members and sold some books, but Saturday was much quieter than previous shows, probably because England's crucial Euro '96 quarter-final with Spain was taking place that afternoon. Sunday was much better, with England's success making everyone feel cheerful, and the families came out eager for some weekend amusement.

The Middlesex Show has always been a great favourite with my family as it has something for everyone. There is show jumping, with lots of famous riders competing; dog shows and canine agility competitions; heavy horse musical drives; vintage vehicles; local schools' brass bands. There are farm animals, hawks, rabbits, guinea pigs and budgerigars. Plus lots more, with plenty of things to buy such as cloths or arts and crafts, and food and drink of every variety.

So we hope to see more members visit our stall next year. However there has been talk that the show ground is under threat from the proposed theme park and studio complex that Warner Brothers hope to build in Hillingdon, locally nicknamed 'Hillywood'. Now although I am a great fan of the Middlesex Show, I also realise how badly the British film industry needs the shot in the arm that this project could bring. So I was horrified to see people collecting names on a petition to stop Warner Brothers from building there. I would think that there must be other suitable sites on which to hold the show in Middlesex. We need progress and jobs in Hillingdon just as much as recreation. Almost all the British film studios are hopelessly outdated. Most were built before the war and are too small for modern productions. The only studio capable of shooting large blockbusters is the 'James Bond Stage' at Pinewood, but this is so booked up that even the James Bond movie Goldeneye had to be made entirely on location - mostly using derelict ground at the old Rolls Royce factory and runways at Levesdon aerodrome. So hopefully a compromise can be made, to allow the studio complex and theme park to be built and yet to continue to hold the Middlesex Show at an alternative open space or sports ground in the county.

ST CATHERINE'S HOUSE COURIER SERVICE

I am pleased to report that this service has provided funds amounting to nearly £180 for the Society for the last financial year since I took over. Please keep your requests coming in, but I do apologise in advance for any delay which might occur, due to family commitments. Charges for the courier service are:

£7.50 - if the reference is supplied. Please quote all the details given in the index (i.e. name, year, quarter, district, volume and page);

£8.50 - includes a three year search of the indexes (i.e. 12 volumes). Any background information you have to assist me, such as name variations, etc., would be appreciated.

When applying, please quote your membership number and make your cheque payable to me (not WMFHS); all payments must be in Sterling. There is a refund of £6.00 if a three year search is unsuccessful.

Valerie J. Walker, 32 Cunnington Street, Chiswick, London W4 5EN

Original Certificates

Following my request for unwanted original certificates in the March 1996 issue of this journal, I am grateful to many members for sending me their 'spares' and we hope that someone might be interested in buying these from the Society at a cost of £3 each. A list is given below and I am prepared to give more information on receipt of a SAE to make sure the certificate is what you are searching for. I also have the name of the person who donated the certificate, which may or may not help any possible purchaser.

Births

Year	Registration District	Name	Mother's maiden name
1866	Newton Abbot	Robert Arscott	Gifford
1871	Taunton	Charles Austin	?Hole
1864	Hereford	Olive Davies	Brace
1915	West Ham	Violet Grace Elliott	Beard
1856	St Albans	Alice Ann Fisher	Taylor
1849	Tendring	Sarah Gosling	Gosling
1837	Cookham	Eliza Hughes	Stacey
1838	Windsor	Elvia Hughes	Dore
1844	City of London	James Lambert	Russell
1881	Melksham	Lilian Mabel Little	Knight
1870	Stepney	Charles Mills	Piper
1847	Brentford	John Richard Neill	Thorne
1843	Wokingham	Jane Powney	Fletcher
1872	Merthyr Tydfil	Elizabeth Rowlands	Williams
1852	Stamford	Selina Wyles Scott	Wyles
1861	Cheltenham	William Turtle	Welch

1863	Cheltenham	Willie Alfred Turtle	Scrivens
1880	Cheltenham	Harriet Elizabeth Turtle	Medcraftsouch
1891	Cheltenham	Louisa Maud Turtle	Davis

Marriages

Year	Registration District	Groom's name	Bride's name
1861	Newton Abbot	Robert Arscott	Eliz. Margaret Gifford
1911	Portsmouth	Henry John Blake	Sarah Jane Coates
1856	West Derby	George Henry Carr	Caroline Barnes
1857	Cardigan	Thomas Davies	Elizabeth Jones
1874	Bromley (KEN)	John Gregory	Mary Ann Collyer
1876	Middlesbrough	Richard Jones	Mary Daniel
1918	Billericay	Herbert Henry Lewis	Edith Cecila Clark
1867	Maidstone	James Mortimer	Mary Ann Bromley
1865	Maidstone	Robert Nichols	Mary Ann Bromley
1915	Wrexham	Albert Edward Owen	Edith Emily Evans
1864	Llanwrst	John Roberts	Margaret Roberts
1851	Kensington	William Spencer	Sarah Holman
1909	Clewer (BRK)	Edmund Felix Turner	Eliz. Phoebe Phillips
1887	Cheltenham	William Turtle	Olive Davis

Deaths

Year	Registration District	Name	Age at death
1844	Cosford	Mary Ann Avers	34
1911	Kensington	Ann Emily Blake	83
1909	Mansfield	James Henry Blake	59
1922	Fulham	John Fenton	39
1849	Walsingham	Harriet Gooch	3 months
1845	Tendring	William Gosling	17
1837	Cardigan	Mary John	42
1843	St Luke, MDX	Henry Lambert	57
1837	Newport Union	William Morgan	43
1930	Gravesend	Vera Lilian Page	16
1931	Lambeth	Vera Page	18
1923	Windsor	Mary Phillips	73
1943	Witney	Elizabeth Temple	79

DIRECTORY OF MEMBERS' INTERESTS 1995

Copies of the booklet are still available; you can obtain yours by writing to Richard Chapman at the address given inside the front cover of this issue. The price is £1.50 plus p&p (UK 31p, Overseas surface mail 50p, Europe Airmail 61p, US/Canada Airmail £1.06, Australia/ New Zealand Airmail £1.18). Please make your cheque (in Sterling only) payable to West Middlesex Family History Society, and quote your membership number with your order.

The Journey to Work in the Twentieth Century

A Request for information

Following the success of the Residential Histories Project, which owed a great deal to the assistance provided by large numbers of family historians, we have recently begun work on a new research project. A summary of the findings from the migration project was sent to your society¹. The new project has developed out of the migration project and is funded for three years by the Leverhulme Trust. The study focuses on men and women who began work between 1890 and 1990 in seven parts of the country, namely; London, Manchester and Salford, Glasgow, Cardiff, Leicester, Norwich and Aberdeen. Although we are interested in people who began work in these specific areas, we are interested in their details regardless of where they moved for work later in life. We are collecting information on occupational history, residential history and the journey to work for all people included in the study.

Your family history society has kindly allowed us to place this request in your magazine as a way of contacting family historians who may be able to provide us with information on individuals who began work in these areas in this period. If you have information (or know of other people who may be able to help) we would like to hear from you. It would be particularly helpful if you could tell us how many people you are able to provide information for. Once you have contacted us, we will send you forms, detailed instructions and a stamped- addressed envelope for their return.

We must emphasise that any information which is provided will be used only for the purposes of academic research and confidentiality will be strictly maintained in future publications. In addition to other publications, we will be happy to write a short piece for your journal so that you will know the outcome of the research.

If you think you can help with the project in any way please contact Jean Turnbull as soon as possible at the address given below. Following your letter or telephone call she will send you forms and detailed instructions. If you wish to know more about the project please do not hesitate to contact us.

Project Director:	Dr Colin Pooley, Senior Lecturer in Geography
Research Associate:	Dr Jean Turnbull, Department of Geography, Lancaster University, Lancaster LA1 4UB

Telephone: 01524-593730

Email: j.turnbull@lancaster.ac.uk

¹ Please send a SAE plus an extra first-class stamp to the Editor if you would like to receive further information on this.

To the residents of Harmondsworth and no doubt travellers using the A4, locally known as the Bath Road, the demolition of the Peggy Bedford Hotel in September 1995 seemed an unnecessary and wanton act of vandalism. The building had stood for almost 70 years on the junction of the A4 Colnbrook Bypass and the B3378, the old coaching road to Bath, which runs through Longford and Colnbrook, re-joining the Bypass at Brands Hill near Sutton Lane.

It was an unusual name for a public house and very few locals let alone motorists partaking of a welcome break there would realise the significance of the name.

The building was a typical inter-war construction, mock Tudor with pseudo-half-timbering and Elizabethan style chimneys. Aesthetically it was quite acceptable; it was attractive and comfortable. Had it been a few yards further down either road, no doubt it would have been spared, but because of its prominent position it was decided that commercially a petrol station and a drive-in take-away were going to be more profitable.

Why was it built there in the first place? And why the unusual name? For the answer we need to go back to the year 1782, for in August of that year a baby girl was born to John and Mary Bedford, licensee of the King's Head Inn in Longford. She was christened Peggy on the 9th of that month. The vicar of St Mary's, Harmondsworth, at that time was Revd Robert Burt, the same clergyman who in 1785 illegally married the Prince of Wales to Mrs Fitzherbert (although not at Harmondsworth). The christening ceremony took place in the public house itself and was witnessed by the clerk, William Haynes.

Peggy was the second child born to John and Mary, they themselves having been married at Harmondsworth on 6 December 1778 by special licence. John was born in 1740 and was a widower when he married Mary Dean. Mary was born in 1756 and at the time of their marriage, John was 38 and Mary 22. Their wedding was witnessed by Jonathan Fellows and Matthew East, a fellow publican who at that time was landlord of the Sun Inn public house, now a private dwelling still standing next to the church. John Bedford was an active member of the church and a churchwarden. At a vestry meeting held at Longford in July 1789 it was agreed to construct a strong house at Harmondsworth for the reception of felons and other disorderly persons and for some strange reason John Bedford was to foot the bill. He was probably an astute business person, as we find an account dated 6 June 1791 for John Bedford providing the sacramental wine for the church.

John and Mary's first child was Joseph Henry; he was christened on the 5 March 1781 at the King's Head Inn, as were all succeeding children. Five more children were to follow, including Peggy; Susannah, who died as an infant in September

1779, John in October 1783, Mary in October 1785, and Robert in August 1787. But it was Peggy whose name was to become immortalised for over a hundred years in not only the hotel recently destroyed, but also the original public house at Longford.



Peggy Bedford

The King's Head Inn stood some 1000 yards or so west of the later building and about 60 yards east of the Duke of Northumberland's river.

Colnbrook was considered the first major coaching station to the west of London and was the next changing town for the horses, Hounslow being the first. But the taverns of Longford would always try to catch the first or last of the coaches, particularly during the winter months and early nightfall. They also took advantage of the terrible road conditions that prevailed at the time, with flooding and the enormous obstacle of fording the three rivers that run through the hamlet - hence the name. The Kings Head Inn was fully prepared. At the height of its popularity it could boast stabling for over sixty horses, and with its own productive vegetable gardens and mature orchards, it could offer anything as good as the other inns and hotels further down the road at Colnbrook. During its heyday as an inn it boasted four guest sitting rooms, nine bedrooms, spacious extra stabling with barns and a cattle yard containing pig sties and cow stalls. The pleasure gardens were extensive, bordering the Duke of Northumberland's

river to the west and with a similar coverage to the east. They extended northward along the river for a good three hundred yards. The gardens contained a detached brick built summer house and there was also a fish pond for the table. In all the Kings Head Inn, its gardens and other enclosures covered over thirteen acres.

The gardens were considered some of the finest in the area. Trippers would come down from town on public holidays, just to spend a day in the country amongst some of the most interesting trees and shrubs to be found anywhere within easy coach journey from London. The tea gardens were noted and during the early part of this century it became the headquarters for several cycling clubs and for some strange reason a training centre for international boxers. Until quite recently there stood in the grounds the remains of a very old but alive cedar tree and during the late nineteen-fifties there were still two living ancient but hollow elm trees standing in the semi-circle forecourt off the road. Local legend says that they were planted by Queen Elizabeth I. It is also said that Peggy Bedford, when landlady of the King's Head Inn, kept her money in one of them and hence they became known as Peggy's money box.

There appears to be no evidence as to the date of the building, but two dates that were incorporated in the chimney and noticed in 1934, at the time of the demolition, were 1691 and 1756. There were clearly defined portions of the building, as one entered the front door. The rooms to the left were certainly very old; they had low ceilings, suggesting a seventeenth century construction. Evidence seems to suggest that a new wing was added in 1630. The other rooms to the right were considered to be later. This was the Great Parlour or Commercial Room. Here the rooms were lofty and suggested a "Queen Anne style", possibly added after extensive fire damage during the latter part of the nineteenth century. The kitchen escaped this fire and contained a scullery with three coppers and a pump for emergency use; the floors being laid with ancient stone. There was a skittle-alley, although this had fallen into disuse by the earlier part of this century. The twelve bedrooms were interestingly designed, with deep alcoves, narrow passage-ways and possibly genuine leaded and 'bottled' windows. It also had a large cellar, used as a beer and wine store, and reputed to contain secret passages.

John Bedford died in May 1794, aged 54, his wife Mary dying thirteen years later in September 1807, aged 51. The 1816 enclosure award shows Mary Bedford together with Amy Gibbons holding not only copyhold lands in Whitmead Lane, Longford but also the King's Head, in spite of Mary having died some nine years earlier. But it appears that the King's Head Inn was jointly run by Peggy and her brother Joseph after their mother died. Robert, her younger brother, died in 1830, aged 42, and with Joseph dying some three years later in May 1833, Peggy became the sole proprietor. We know very little about her tenure there, but it is reputed that on one occasion when Queen Victoria was

on her way to Windsor, the coach in which she was travelling stopped at the King's Head Inn. During the Queen's stay Peggy had the responsibility of caring for the young baby, the Prince of Wales, later to become King Edward VII.

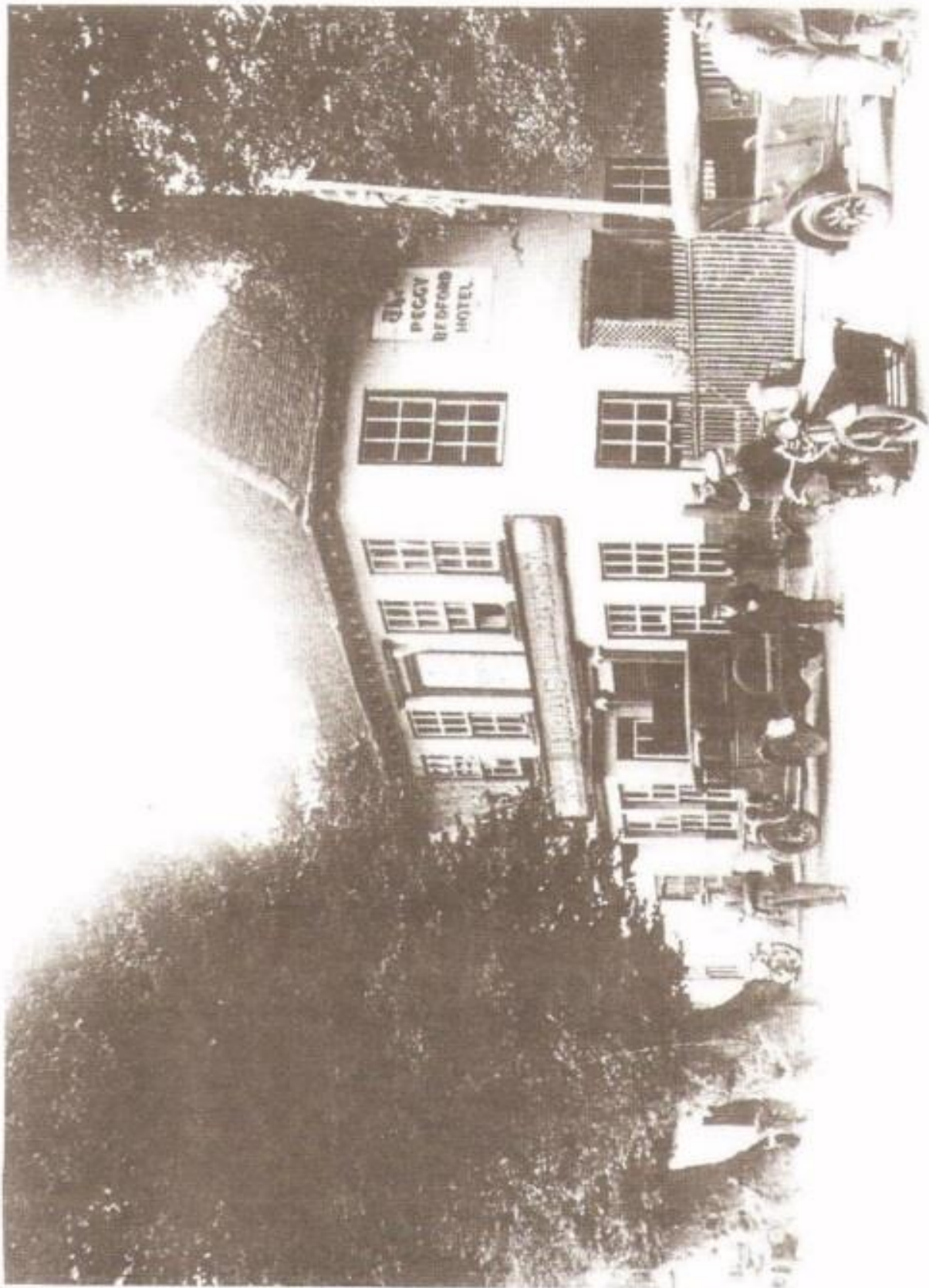
In 1838, Peggy leased a cottage and garden belonging to the Society of Friends. This would have been the cottage opposite, now known as Longford Cottage or the Quaker House. She was obviously not a good tenant, because eighteen years later in 1856 she was given notice to quit, not for the first time, for failing to pay her rent. In fact the debt was not settled until after her death.

Peggy died on the 2 February 1859, having managed the inn for just over fifty years. She was buried at St Mary's Church, Harmondsworth, in the same grave as her brothers Joseph and Robert. Her parents John and Mary are next to them. Their graves are difficult to find now as the weather has almost obliterated the lettering.

The inn came up for auction in May later that year and the new landlord was Thomas Blondell. The Blondells were a Harmondsworth family, one serving as sexton, grave-digger and churchwarden, whilst another was a member of the Harmondsworth Fire Brigade. A recent housing development in the village bears the Blondell name. In 1863 we find the Longford Cricket Club having their after-match dinners at the King's Head Inn.

It was probably between Thomas Blondell's tenancy and that of T. Stanbrook in 1889 that the Kings Head Inn was badly damaged by fire. It was re-built and about this time the name The Peggy Bedford Inn seems to appear. It is certainly mentioned as such on an indenture for a mortgage redemption deed dated May 1888. Phillimore in his book *London and Middlesex Notebook*, published in 1892, says that the inn is now known as the Peggy Bedford, but still carries the sign of The King's Head Inn. References made to it in 1901 say the King's Head whilst a year later in 1902 it is referred to as the Peggy Bedford. In 1921 Mr Walter Shubbrook and his wife Ethel became landlord and landlady and in the Uxbridge Trade Directory of 1926 the place is still referred to as the Kings Head Inn, although the photographs taken about that time clearly show it as The Peggy Bedford Hotel. One can only assume that the official name was still The Kings Head Inn and the local name The Peggy Bedford.

The decision in the late 1920s to construct the Colnbrook Bypass rang the death knell of the former King's Head Inn. Harmans of Uxbridge, the brewers who owned the building, realised that the trade would suffer as a result and decided to construct a new hotel on the junction of the new road. In February 1927 Harmans formally started to close the Old Peggy Bedford and work started soon on the new building. However on the suggestion of the patrons and supported by Sir Henry Curtis Bennett, KC¹ it was to be officially named 'The Peggy Bedford' in honour of the earlier landlady.



The Peggy Bedford in the mid-to-late 1920s

¹ Sir Henry Curtis Bennett, J.P. was born in 1879. He played an eminent role during the First World War in the Secret Service and was knighted in 1922. He was probably responsible for hotel licensing and one assumes he was a frequent visitor to the King's Head Inn. He died in 1936.

On the 19th of October 1928 the New Peggy Bedford was formally opened, with Mr and Mrs Shubbrook transferring from the old building. Just eight days earlier the Old Peggy Bedford was sold by auction, the sale taking place at the new hotel. It was purchased by a Mr AC. White of Gordon Square, London, as an unlicensed premise. He in turn leased it to a Mrs Williams, who ran it occasionally as a guest house. Sadly, Walter Shubbrook died in May 1930 within two years of their tenancy and the licence was then held by Mrs Ethel Shubbrook.

Tragedy struck at 11.25 on Monday evening, 22 January 1934, when fire broke out in one of the main rooms of the Old Peggy Bedford. A Mr R. Hunter, the caretaker at the time, who was living in a cottage next to the building, heard crackling sounds and running into the road saw flames engulfing the entire frontage. Within five minutes the Harmondsworth Fire Brigade were on the scene, but to no avail; by the time they arrived, the whole building was a blazing inferno. In spite of the tremendous effort put in by the firemen, they were unable to contain the blaze. It was a freezing night and the water that was being taken from the Duke of Northumberland's river, as well as a hydrant at Fair View Farm (now demolished) froze solidly in the hoses before the brigade could deliver it to the fire. Over two thousand feet of hose were used on this occasion. All they "managed to save was a portion of the building at the rear, possibly the oldest part. By seven o'clock next morning what remained was a steaming ruin. The fire was exacerbated by a broken gas main, which took several hours to locate and isolate, and as a result of the fire the electricity supply in Longford failed. The New Peggy Bedford came to the rescue, supplying tea and refreshments at 2 a.m. to the firemen. Mr Hubert Bateman, secretary to the Harmondsworth Fire Brigade, said 'When we got there, the place was doomed, the roof had already gone.'

The old Kings Head was gone. Out of the rubble were constructed three new properties; Longford House - which suffered a bad fire a few years ago - The Stables - quite a portion of this part of the building had been saved - and appropriately Phoenix Cottage. Gone was the haunt of so many visitors over three hundred years or so, gone were the legends of Dick Turpin and the Georges. It was said that Oliver Cromwell and his Roundheads had gathered there and even Charles II and Nell Gwynne, on their way to Windsor. But in spite of the myths, there is no doubt that Longford that night lost not only an architectural gem but a house steeped in history

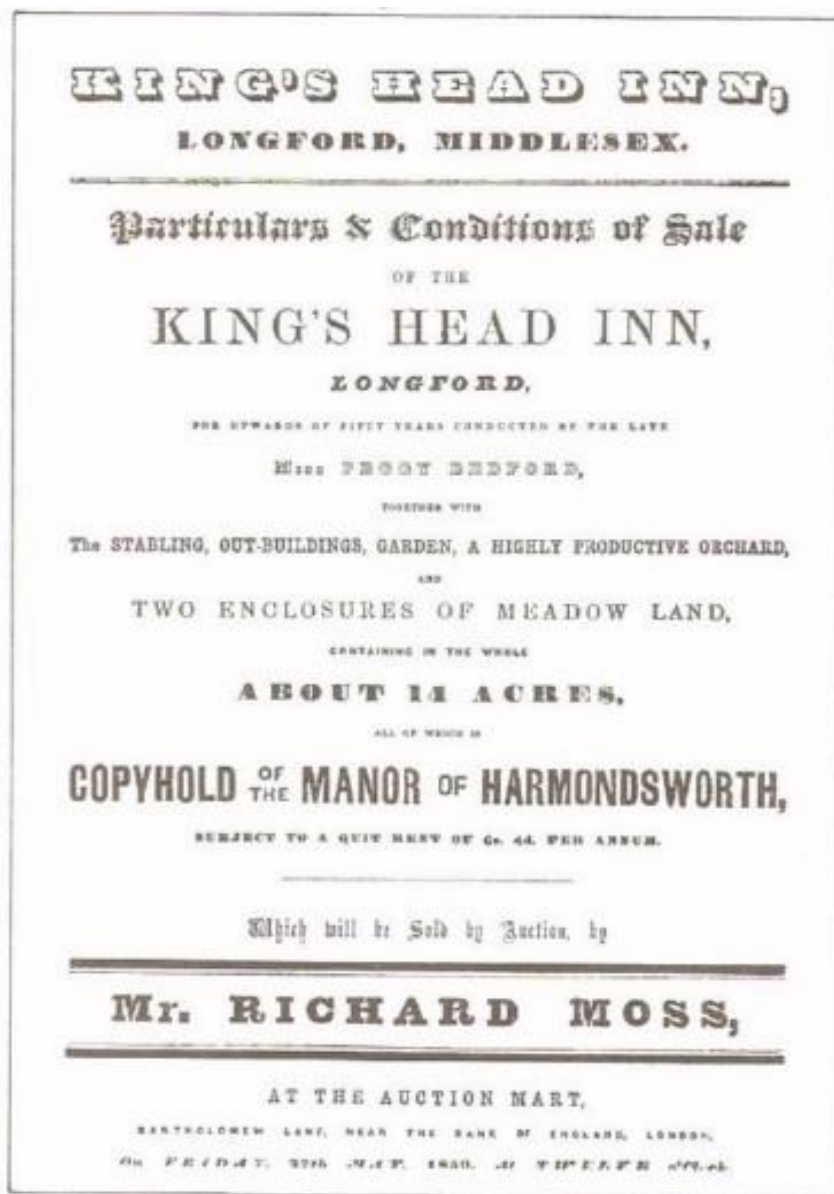
The Colnbrook Bypass was fully opened to traffic in 1929 and by that time the New Peggy Bedford was well established. But that building in its time was to experience a similar fate.

One night in 1937, fire broke out as a result of an electrical fault in the bedrooms and within an hour of so the whole upper floor, together with the roof, was virtually destroyed. Once again Harmondsworth Fire Brigade was in attendance, but this time with the help of that from Staines. The building was

saved and although the bars were opened next day, the hotel rooms were not available for some months.

During the Second World War enemy bombs fell in a line across Heathrow, missing the Peggy Bedford by only a few yards and causing minor damage. Perhaps Peggy's ghost was restless because during the late 1960s fire again damaged the building. This time it was caused by unsightly neon tube lighting recently fixed to the gables; the damage was repaired but the neons were not replaced.

Ethel Shubrook was to continue as landlady with her daughter Mabel at the Peggy Bedford until her death in November 1948. Mabel retired in the late 1950s and died in 1991. Her ashes, with those of her husband George Pybus, were interred at St Marys in the same grave as her parents, only a few yards from where the remains of Peggy Bedford herself, so long immortalised in the name of the hotel, but soon to be forgotten.



The sale bill at the time of Peggy Bedford's death

HELP!

This service is free to members of WMFHS (please quote your membership number when writing). In order to ensure that your appeal is published correctly and is clear to other readers, please make entries clear and concise, give all personal and place names in BLOCK CAPITALS, and all dates in full. Entries from non-members can be accepted, at a rate of £3.00 for up to ten lines. Payments must be in Sterling only, with cheques made payable to WMFHS.

COLNET / PARSONS / ECOB / VELLAM / BUSHELL

Henry COLNET, born c. 1815, Brompton, married (?) Sarah PARSONS, born c. 1810, Stowell, Somerset. In 1851 Henry and Sarah are living at Montpelier Row, Brompton with children Susan, 13, Henry, 11, Mary Ann, 5, Emily, 4, Sarah Jane, 2, and Fanny, 8 months. In 1861 Henry and Sarah are at Hoppers Court, Brompton, with Sarah Jane and Fanny. In 1868 Fanny gave birth to an illegitimate son James Edward COLNET. He married Harriett Alice CORDEROY in 1893, Southwark. Susan COLNET married Thos. ECOB in 1866 at St Luke, Chelsea; in 1881 they were in Islington. Henry COLNET married Elizabeth ?, from Portsmouth. Sarah Jane COLNET married Chas. VELLAM in 1870 at St Simon, Chelsea; in 1881 they were still in Chelsea. Emily COLNET married George Fred- Henry BUSHELL in 1871 at St James, Bermondsey; in 1881 they were in Chelsea. Can anyone help on any of these names? Any information gratefully received; all letters answered
Mrs Ann Colnet, 14 Little Thrift, Petts Wood, Kent BR5 1NQ

KEILLAR / KIELLOR

Seeking all instances of these names and their variants, particularly (but not limited to) the families of William KEILLAR and his wife Jane LACK and John KIELLOR and his wife Emily KIELLOR. Probably in the Islington or Chiswick areas in 1871, but not yet found living in that census. Maybe a KIELLOR working as an apprentice and living with another family?
Mrs Adrienne Kiellor-Edwards, Ringstrasse 40, 55278 Dexheim, Germany

RUSSELL / MOFFAT(T)

Harriet Ann(ie) MOFFATT, formerly RUSSELL, is shown on two birth certificates as being the mother of a. Walter George MOFFATT, born 18 December 1850 at 9 New Millman Street, district of St Pancras; father Edward MOFFATT, officer in the navy, and b. Frederick MOFFATT, born 29 January 1858 at 6 Laurel Cottages, Hammersmith; father Frederick MOFFATT, mariner. I have not found any record of marriage to either of these names, nor any 1851 census listing for the first. Both boys appear on the 1861 and 1871 census living with their grandmother at Strand on the Green, Chiswick, but no mention of their parents. Please can anyone help?
Rod Moffatt, 25 Stenhill Cottages, Stenhill, Uffculme, Devon EX15 3DH

With the publication of the index for Lancashire in September 1996, the 1881 Census Index Project is complete, four years after the first county, Flintshire, appeared. In the Journal for June 1993 I wrote on my impressions of the indexes as they were first produced. Some three years on, with the job complete, I thought I would give a follow up.

Firstly, a great debt of gratitude is owed to all those who helped in the making of the index: to all those who took on the onerous task of organising the transcription for their areas and especially to Les and Jill Munson, who did the job for our society with great enthusiasm and efficiency. Also to all those who transcribed parts of the census - too numerous to name individually. Then only the organisation and resources of the Genealogical Society of Utah have made it possible to produce the series of county indexes we now will use with alacrity. To all, the family historian owes a great deal.

The only criticism I have is that the three sets of indexes produced are to a degree similar. The birth place index would have been of more use if it was an index by just birth place, to show all those born in a certain place listed together, rather than as the index was produced. However, this is a minor quibble.

The indexes have enabled us to locate those members of our family who were in the 'wrong' place, like my great-grandfather, who was living in the Birmingham area between 1879 and 1885, but who was lodging in Greenwich in 1881. Without this index I would never have found him.

My main interest in the 1881 census index is for a one name study of the Rosewarne family. So far I have found 329 people with this name, or an approximation to it. In some cases the search required looking at all the entries beginning with 'Rose'. This threw up Roscivarne, Rosecarum, Rosewane and Roseward; all of which were actually Rosewarn(e). Looking further afield I came across Roswarne, Rosswarren, Ruthwarn, Russwarn; then Bosewarne - yes, with a capital 'B'!

In the case of Roscivarne and Rosecarum, on looking at the original enumerators books, I found that the spelling could be almost anything, the handwriting was so bad. But in all the other cases, except Bosewarne, the transcriber has written down what was in the enumeration book.

Another family I am researching is named Cattermole. They were living in London in 1881, but initially I could not find them on the census. Finally I found them indexed under 'Caltermole'; this was how the name was spelt in the enumeration book, the 'l' and 't' being quite distinct. In the Middlesex index I found the following variations of the same name:

Cattermole/moul; Catamole/mull; Cattamole; Cuttermole; Cullermole.

This points out the need to search the index thoroughly for any possible variation of the surname being researched, when it cannot be found under the spelling that is expected.

I have also been transcribing the 19th century censuses for the Hampton-Teddington area. This has shown a number of ways in which the information on the census can be wrongly transcribed and indexed. In order to understand how mistakes on the census occur it is necessary to know how the census information was collected and recorded.

Taking the census

It must be remembered that the 19th century census was taken for statistical purposes and the questions asked were to enable the Government to determine the density of the population, the age spread, details of employment, migration, etc. That the returns happen to be so useful in genealogical research is entirely fortuitous.

The censuses from 1841 to 1891 were taken, as they are today, by enumerators, who left a schedule with each householder in the week before the night on which the census was to be taken. The head of the household had then to fill in the schedule, listing all the persons who slept in that house on the census night — usually the first Sunday in April. In the case of householders who could not write the enumerator had to take down the details verbally.

In taking the 1871 census the enumerator was asked how many schedules he filled in himself. In the Hampton sub-district 90 schedules were filled in by enumerators, out of a total of 2400 (3.75 %). But this showed a wide variation in different parishes. In Hampton and Hampton Wick 6% were written by the enumerator, but in Teddington fewer than 1% were. The population of Teddington was no different in terms of social standing to that of the two Hamptons.

The householder who wrote down the details of those in the house often included people not in his or her family, such as servants, visitors, boarders and lodgers. Other instances were in the institutions: schools, orphanages, military establishments, workhouses etc.

There were those who filled out the census schedules conscientiously, asked these people their particulars and wrote them down correctly. Others did not. Surnames were sometimes written down how the householder thought they should be - phonetic spellings have been found. For example, Lewcock, a Hampton name, was written as Lucock. In some cases there is no entry for place of birth. Was it not known, or did they not ask?

When he had collected all the schedules, the enumerator had to copy the details from them into the enumeration books with which we are so familiar. There are

thus two ways errors can occur in correctly noting a person's particulars. Verbal communication is always unreliable; I am very aware of this as my name is often thought to be Rosewall when spoken. How much more difficult it must have been in the 19th century, when regional accents were more pronounced. Secondly, the enumerator was faced with copying several hundred schedules, in many of which the handwriting must have been poor. In transcribing the census enumeration books, when a difficulty occurs in reading a letter or several letters, one can always look for similar occurrences of the writing, especially with capital letters; there is a large sample to see. The enumerator had perhaps only ten or twenty words, and may therefore have been unsure and copied what he thought was the right name or place.

Errors by enumerators

For the accuracy of the census returns we are reliant on the enumerator copying the schedules correctly. In some cases he did not. In the census returns for the Hampton District for 1861 to 1891 several enumerators wrote the surname for every member of the family instead of using ditto marks, as most did. This has shown up a number of cases where one family apparently had two or more surnames.

The most notable cases were where an enumerator either missed or added a capital letter, e.g.

Father	Bridges
Mother, 1st child	Ridges
2nd, 3rd child	Ridge

In another case the husband, wife and three children were written as Cray, but two other children as Gray, the variations being intermingled. In another family the father and mother were written as Wallace, the mistake was then realised, the mother's name was then altered to Wallis, and all the children listed as Wallis. One name could be Hatton, Hallon or Halton; there appears to be a cross on the 'tt' for the father's name, but not for those of his wife and child.

Other examples:

Parents: Cheswas	Children: Chesswas
Husband: Magson	Wife: Mayson
	Brother: Mason
Head, wife and	Father; Pickton
children: Picton	
Husband: Spurr	Wife: Spurr
Father: Lawrence	Rest of the family: Laurence
Husband: Blackburn	Wife: Blakbourn
Coulbank; one page	Coalbank: thenext
Mother: Hobberton	Daughter: Holberton (correct)
Father: Trimoner	Wife and child: Trimmer

One enumeration book for Hampton Hill in 1891 was so badly written that the Christian names were consistently spelt wrong. Some examples are Carloine, Matilada, Betrice, Leynord, Winfred, Clawdine, Bengamin, Linoel, Gretrude, Glaydes, Fredrick, Germina, Mayion, Cicel, Voliet, Margrat, Lisebeth, Scharlotte, Sharlotte (these two were in the same family) and Abert. Elizabeth was mainly spelt Elisebeth, whilst Eliza was always spelt correctly. In others letters were either missed out or misplaced (e.g. Caroline was very rarely spelt correctly). With these examples, how could one place any confidence in his transcription of surnames?

It was possible to check some of his surname spellings with those in the 1881 census. It showed he again left out letters, or even added ones:

Woodard, Alln, Baily, Chaphman, MKenzie for MacKenzie, Mayjor and Scarbrou.

In most cases his mis-spelling was a phonetic version; Murcer for Mercer; Seamore for Seymour and Mayson for Mason. Others were just guesses on his part - Bolonier for Bouinois and Nekeford for Wakeford.

Very occasionally it is found that the surname given is probably incorrect, such as where servants appear to have the same name as the head of household - possible for common names, but in one or two cases unlikely.

Where the enumerator used ditto marks, instead of repeating the surnames, these marks were sometimes missed out, especially when members of the family had several Christian names which were written in full. In one family only the wife and two eldest children were indicated as having the father's surname, the other five children just had two Christian names each, so it was assumed that they had the father's surname.

In one family the parents' surname was Barnett and the first child was Wilhelmina Crawford, with no ditto following. The rest of the children, several of whom had surnames as second Christian names, had a ditto mark after. Did this refer to Crawford or Barnett? The youngest child was less than one year old.

Then Sarah A. Constance is written on one line with the name Mussett on the following line, which otherwise was blank; was this Sarah A. Constance or was Mussett her surname? Both possibilities were given in the index.

Errors in transcribing Christian names are much harder to spot. Though there is one case where the head of the family was written as Caroline. This was crossed out and another hand has written Cornelius; it was a man.

The main problem with Christian names is that people may be entered in the census with variations of their name, with their two Christian names reversed or with their second Christian name only. My great-great-grandmother's name was always given as Elizabeth Sarah Walker on all certificates, but as Sarah Walker

on all the census returns. Another ancestor was given as Samuel or Samuel George, although he was born George Samuel. Other examples include Hannah as Anna, Elizabeth as Bessie, Eliza or Lizzie, Ann as Nancy, Frances as Fanny, Helen as Ellen (and vice versa), Amelia as Emily. A person with two or more Christian names is quite often only given one in the census.

It can sometimes be seen that the age given is wrong, for example a son aged 68, living with his mother of 34. The ages were, in fact, reversed. Another case was a woman of 59 with a child of one - she was actually 39. Again, parents in their early twenties with a child of 10 - presumably 10 months (or weeks or days). But what of one family, where the husband was 23 and his wife 21, but had children of 11 and 8; how does one interpret this? I can only assume the parents' ages were in fact 33 and 31.

The place of birth column is a crucial one for the genealogist and when it is wrong, this is more misleading than any other information taken from the census. Here it is impossible to determine whether mistakes are the result of careless copying by the enumerator, or wrong information supplied by the householder. In Sheffield in 1851 a grandmother had two grandchildren staying, one was born in Manchester, and the next grandchild, by a different daughter, was also given as born Manchester, when in fact he was born in Sheffield; did the enumerator copy the information from his older cousin'?

A family living in the Teddington-Hampton area was resident in several parishes from the 1870s and on the each census they always gave their place of birth as the parish they were then resident. I have found several other instances of when a person was given as born where they were living, when in fact they had been born somewhere else.

In a couple of cases where people are given as born in different places on two census returns, the explanation may lie in who filled out the schedule. One filled out by an uncle gave one parish, but later when his niece was married she gave another. In fact the uncle was right. Another occurred when the parents moved when the child was about six months old. The parents gave the correct parish, while the son gave the town he had lived in from a baby - he obviously thought he had been born there. Where employers, landladies and others unrelated to the person made out the schedule, they may assume or guess where a person was born; if someone came from Bristol they may think that they had been born there, whereas they may have been born, say, in Bath.

All these possibilities for errors in the census point out the care needed in interpreting the returns. Although I have found most information to be correct, the occasions it is wrong can send research in the wrong direction. Never accept information from one source as totally accurate until it can be checked against another.

THE VALUE OF SEEKING OUT PLACES OF BURIAL

Peter Gillard

As part of my efforts to find as much information on my ancestors as possible I have endeavoured to locate their last resting places. For the metropolitan area, there is a useful publication from the Society of Genealogists, compiled by Patricia S. Wolfston, entitled *Greater London Cemeteries and Crematoria Companies*, which I used to locate the dates that cemeteries were in use and the address at which the information is now deposited.

Armed with the necessary information, I started to write to the cemetery repositories in and around London. It is not always obvious where an interment may have taken place or if the associated information is still available (or legible) - so be prepared to make a number of enquiries. There is often a charge made for such enquiries. This varies from place to place; some are free.

I eventually found the ancestors that I sought in the West Middlesex area at Hanwell Cemetery, Gunnersbury Lane. On a very wet and windy November day I photographed the graves and wrote out the inscriptions, as I stood under an umbrella held by my wife Christine. Information on the inscriptions follows later in this article. I initially sought a burial for a John Gillard in September 1871, but had no luck, due at first to the legibility of the burial record book and then the fact that his was not the first interment in the grave. The cemetery records appeared to show only a Joan Gillard, buried in 1871 at Hanwell. As I found no other likely candidates in other cemeteries I tried another tack and enquired for the burial entry of John's daughter, who died young in 1863. This proved successful and the embarrassed member of staff at the Hanwell office obviously remembered my initial enquiry and realised his mistake. To make amends he also provided me with another Gillard burial in 1897 at no charge, having searched the records as far as the 20th century.

In many cases several members of a family may well be buried in the same grave over a period of time, as I found with my ancestors. This is of course a bonus to a genealogist, as the information on a family is literally carved in tablets of stone and can be quite comprehensive. In the case of my ancestors, even addresses are given, which to say the very least was an unexpected find and seems a very strange inclusion.

The following is the information on the Gillard headstone found at Hanwell Cemetery;

TO THE SACRED MEMORY OF ELIZABETH ANN DAUGHTER OF JOHN
AND MARY GILLARD OF NO. 6 PORTLAND ROAD NOTTING HILL
WHO DEPARTED THIS LIFE ON THE 15TH DAY OF NOVEMBER 1863 IN
THE 17TH YEAR OF HER AGE 'NOT DEAD BUT SLEEPETH'

ALSO JOHN GILLARD FATHER OF THE ABOVE WHO DIED
SEPTEMBER 30TH 1869 IN THE 57TH YEAR OF HIS AGE 'IN THE
MIDST OF LIFE WE ARE IN DEATH'

ALSO MARY GILLARD WIFE OF THE ABOVE WHO DIED NOVEMBER
26TH 1875 AGED 66 YEARS 'I KNOW THAT MY REDEEMER LIVETH'

The above stone is in remarkable condition considering its age and shows no
sign of erosion. It may be black granite, but I am no expert.

Finding the family grave may not be the end of the story, as it is quite possible
that others may be nearby. Once again I cite my own family as an example.
Immediately behind the Gillard grave at Hanwell was a grave, again with
multiple occupancy and information spanning three generations and 71 years! - a
good indication that many of the family resided locally well into the 20th
century.

The Croker and James graves have a headstone plus three other inscribed stone
tablets. (Mary Croker nee Gillard was the eldest daughter of John Gillard.) The
following is the information on the headstone:

TO THE MEMORY OF MARY CROKER LATE OF CLARENDON ROAD
NOTTING HILL WHO DEPARTED THIS LIFE SEPTEMBER 23RD 1868
AGED 7½ YEARS 'BLESSED ARE THE DEAD WHICH DIE IN THE LORD'

ALSO JAMES CROKER FATHER OF THE ABOVE WHO DEPARTED THIS
LIFE 2ND MAY 1870 AGED 43 YEARS 'AT REST FOREVER WITH THE
LORD'

ALSO EMMA ELDEST CHILD OF THE ABOVE WHO DIED 2ND
SEPTEMBER 1880 AGED 21 YEARS 'THY WILL BE DONE'

ALSO ELIZABETH ANN SISTER OF THE ABOVE WHO DEPARTED THIS
LIFE JANUARY 17TH 1884 AGED 16½ YEARS 'ASLEEP IN JESUS'

ALSO OF HIS GRANDSON MARK STANLEY ELDEST CHILD OF MARK
AND FRANCES JAMES 'WHO FELL ASLEEP IN JESUS' JANUARY THE
10TH 1906 IN HIS 15TH YEAR 'MEET ME AT THE THRONE IN HEAVEN'

A footstone has inscribed the initials of the above and their year of death.

The second stone is inscribed:

ALSO OF MARY CROKER WIDOW OF THE ABOVE DIED MAY 28TH
1922 AGED 84 YEARS 'JUST AS I AM WITHOUT ONE PLEA BUT THAT
THY BLOOD WAS SHED FOR ME AND THAT THOU BIDST ME COME
TO THEE O LAMB OF GOD I COME'

The third stone is inscribed:

CHARLOTTE VOOGHI [? The inscription was not clear] DIED 24TH
DECEMBER 1934 AGED 72 YEARS

As you can see there is a lot of information here and it was an unexpected bonus from a single visit to look at the grave of my 3xgreat-grandfather. Most of the later-dated information was completely unknown to me.

I believe the moral of this article is that as genealogists we need to cast our net as widely as possible and make use of every available source. For me it also adds colour and variety to my research. I also feel closer to my ancestors as I have now followed them through their life to their final resting place.

FAMILY HISTORY SOCIETIES IN MIDDLESEX

It is easy for those new to family history research in the London area to become confused as to the 'jurisdiction' of the several family history societies that cover the region. In our visits to open days and other similar events, questions of this kind are frequently raised by visitors to our stall. To help clarify matters with regard to Middlesex and the City of London, the following lists give the main areas covered by the four principal societies. Note that these relate exclusively to areas north of the River Thames - the boundary between the ancient counties of Middlesex and Surrey.

East of London FHS

Mr J-M. Bazzoni, 65 Rose Glen, Rush Green, Romford, Essex RM7 0SL

Barking	Bethnal Green	Bow
Bromley-by-Bow	Bromley St Leonard	Canning Town
Chingford	Clapton	Cranham
Dagenham	Dalston	East Ham
St George in the East	Hackney	Haggerston
Havering-atte-Bower	Homerton	Hornchurch
Hoxton	Ilford	Isle of Dogs
Leyton	Leytonstone	Limehouse
Mile End	Millwall	Plaistow
Poplar	Rainham	Ratcliffe
Romford	Shadwell	Shoreclitch
Spitalfields	Stepney	Stoke Newington
Stratford le Bow	Upminster	Walthamstow
Wanstead	Wapping	West Ham
Whitechapel	Woodford	North Woolwich

(This includes areas in Essex also covered by this society.)

London and North Middlesex FHS

Hon. Secretary, c/o 1d Uplands Park Road, Enfield, Middlesex EN 2 7PS

Barnet	Bloomsbury	City of London
Clerkenwell	Edmonton	Enfield
Finchley	Finsbury	Hampstead
Hendon	Highgate	Holborn

Hornsey	Inns of Court and Liberties	Islington
Marylebone	St Pancras	Tottenham

Westminster and Central Middlesex FHS

Miss D. Heywood, 46 Churchill Place, Harrow, Middlesex HA1 1XY

Greenford	Harefield	Harrow
Ickenham	Kingsbury	Northolt
Northwood	Paddington	Perivale
Pinner	Ruislip	Stanmore
Wembley	Westminster	Willesden

West Middlesex FHS

Miss Y. Woodbridge, 92 Nelson Road, Whitton, Twickenham, Middlesex TW2 7AY

Acton	Ashford	East Bedfont
Chelsea	Chiswick	Cowley
Cranford	West Drayton	Ealing
Feltham	Fulham	Hampton
Hanwell with Brentford	Hanworth	Harlington
Harmondsworth	Hayes with Norwood	Hammersmith
Heston with Hounslow	Hillingdon with Uxbridge	Isleworth
Kensington	Laleham	Littleton
Shepperton	Staines	Stanwell
Sunbury	Teddington	Twickenham

West Middlesex War Memorials There is now a substantial body of name-list material for most war memorials recorded in West Middlesex. It consists of public, churches', schools' and firms' memorials, etc. for WW I and WW II and earlier wars where they exist, although it is not complete yet. Name enquiries, and any knowledge on war memorials you may know about but we don't will be welcomed. When making an enquiry on an individual, please include any information you may have on the village or town where you might expect to find his name mentioned. Please send a SAE to Ted Dunstall, 43 Elers Road, Ealing, London W13 9QB.

London, Middlesex and Metropolitan Surrey - Guides to Research

West Surrey FHS has published a series of guides to research in this difficult area. A list describing these publications is available on request, with SAE, from Mrs R. Cleaver, 17 Lane End Drive, Knaphill, Woking, Surrey GU21 2QQ.

SOCIETY PUBLICATIONS ON MICROFICHE

Monumental Inscriptions

The following transcriptions of monumental inscriptions for churchyards in the West Middlesex area are available.

	UK/£	Overseas/£
St Nicholas, Shepperton	2.35	3.00
St Mary, Magdalene, Littleton	1.35	1.75
St Mary the Virgin, Bedfont	1.35	1.75
St Mary the Virgin, Harmondsworth	2.35	3.00
All Saints, Isleworth	2.35	3.00
All Saints, Laleham	2.35	3.00
All six sets of fiche	9.50	11.00

Surname Indexes to the 1851 Census

	UK/£	Overseas/£
Paddington (HO 107/1466-1467) Two fiche.	2.35	3.00
Kensington, Brompton, Hammersmith and Fulham (HO 107/1468-1471) Four fiche. These, together with the two for Paddington (above) cover the whole of the Kensington RD.	4.35	5.20
Chelsea (HO 107/1472-1474) Three fiche. Covers the parish of St Luke, Chelsea.	3.35	4.00
Brentford Registration District (HO 107/1698-1699) with Hampton Sub-District (HO 107/1604 (part)) Three fiche. Includes the parishes of Heston, Isleworth, Twickenham, Hampton, Teddington, Acton, Brentford, Ealing, Hanwell, Greenford, Perivale and Chiswick.	2.85	3.50
Uxbridge (HO 107/1697) Two fiche. A complete index to the surnames, Christian names and ages for the Uxbridge RD which covered the parishes of Cowley, Hayes, Harefield, Hillingdon, Ickenham, Northolt, Norwood, Ruislip and Uxbridge.	2.35	3.00
Staines (HO 107/1696) (<i>Booklet</i>)	<i>Not currently available</i>	
Includes the parishes of Ashford, Cranford, East Bedfont, Feltham, Hanworth, Harlington, Harmondsworth, Laleham, Littleton, Shepperton, Stanwell, Staines and Sunbury.		

All prices listed above include postage charges. Please indicate the number of each that you require, and send your name, address and order, together with appropriate payment, in sterling only, (cheques made out to West Middlesex Family History Society), to:

Mrs M.M. Harris, Westerwood, Gough's Lane, Warfield, Berkshire RG12 2JR

BOOKSHELF

The First 200 Years of The Green School, Isleworth 1796-1996 - Wendy Mott

This new book, written by a member, Wendy Mott, herself an ex-Green School girl, traces the history of The Green School from its origins as a Sunday School - founded by the then Vicar of Isleworth, Revd William Drake - to the present day, when the school still has strong links with the parish. It is obvious that the school has had high standards for the development of girls throughout the years and care for the neighbourhood and residents is still encouraged today.

The book included details of the benefactors of the school, early days and progress of the school, school uniform, headmistresses, significant dates for the school, memories of staff and pupils and is written in a very easy to read way which proves that history need not be dull.

Many hours of research have gone into compiling this book, which has 120 pages and 29 illustrations. The book is a MUST for everyone with Green School connections and for anyone interested in the local history of Isleworth. It can be obtained from Mrs Wendy Mott, 24 Addison Avenue, Hounslow, Middlesex TW3 4AP, price £5.

120 pp. Published by The Green School, 1996. ISBN 0 952 8890 0 5 £5

Mary Brown

'They Walked This Way' Quakers and others Staines, Middlesex 1650-1950 - Eric Butterfield

Eric has lived in Staines all his life. The pages of this book contain a brief history of Staines and a very informative account of the Quaker presence and effect on the town. It includes a general account of the origin of the Quaker movement and its arrival in Staines, with mention of the Staines, Longford, Brentford and Uxbridge Meeting Houses. There is an account of the Ashby family, who were staunch Quakers and influential business people in the town. Of interest to family historians are further lists of names: Friends interred in Longford and Uxbridge area 1672-1699; Friends interred in the Quaker Burial Ground, Church Street, 1765-1848; Friends interred in the High Street Burial Ground 1848-1949; Staines Parish Baptisms 1644-1694; Staines Parish Burials 1878- 1899. There is also a list of names of Friends' 'disownments' from 1700-1850. Copies are available from the author, 182 Whitley Close, Stanwell, Staines, Middlesex TW19 7EY

100 pp. Published by the author, 1996. ISBN 09528917 0 0 £8.00

Janet Huckle

Basic Facts About ... Using Baptism Records for Family Historians - Pauline Litton

16 pp. Published by FFHS (Publications) Ltd, 1996. ISBN 1 86006 033 1 £1.25

Basic Facts About ... Using Record Offices for Family Historians - Tom Wood

These two new additions to the Basic Facts series provide useful information and advice, particularly for those who are about to undertake research at a county record office for the first time.

16 pp. Published by FFHS (Publications) Ltd., 1996. ISBN 1 86006 032 3 £1.25

First Name Variants - Alan Bardsley

This guide is a cross-referenced index of variants of first names and includes some 8000 variants matched to 1300 standard names. As the introduction states, 'The primary aim is to help identify individuals where there is a possibility that their name may have been modified.' The book includes an introduction, details of the sources on which it has been based, and a bibliography.

108 pp. Second edition. Published by FFHS (Publications) Ltd., 1996. ISBN 1 86006 024 2 £4.95

Writing and Publishing Your Family History - John Titford

A very interesting book and recommended reading for all those researching family history who have wondered about 'writing it all up' - and indeed for those who have not. In four sections - Preparing to write your family history, Writing your family history, Preparing to publish your family history and Publishing your family history - the author gives a straightforward and structured guide to the process.

128 pp. Published by Countryside Books and FFHS (Publications) Ltd., 1996. ISBN 1 86006 029 3 £5.65

Researching Family History in Wales - Jean Istance and E.E. Cann

Compiled by members of the Dyfed and Gwent family history societies, this guide gives an introduction to each of the Welsh counties, together with details of record offices and libraries and their holdings. With full contact details, telephone numbers and opening hours, this will be a very useful handbook for those researching their ancestors in Wales.

88 pp. Published by FFHS (Publications) Ltd., 1996. ISBN 1 86006 030 7 £5.50

an introduction to ... The British Army: its History, Tradition and Records - Iain Swinnerton

A good read, even if you do not have soldier ancestors. The book contains everything you might want to know: how the army was organised, the ranks, uniforms and badges. There are also lists of the Units of the British Army in 1881, Victoria's Campaigns, and the Army in 1996.

48 pp. Published by FFHS (Publications) Ltd, 1996. ISBN 1 86006 031 5 £2.50
Bookworm

Family Business - Geoff Thomason

In 1856 George Thomas Thomason came to Hounslow and in 1858 he produced the Middlesex Chronicle. It was owned and managed by four

generations of the Thomason family until the business was sold in March 1972. Anyone with printer ancestors in their family may find the installation and description of the various printing machinery interesting.

56 pp. Published by Hounslow and District Local History Society. £500

Bookworm

Did you have a family member who was a Bevin Boy during World War II? To increase coal production during the war the government directed these young men to work in the mines instead of serving in the armed forces. The men were chosen by ballot.

The Bevin Boy by David Day (published by Ashford, Buchan and Enright) gives a personal account of what life was like as a Bevin Boy in the Staffordshire coal fields. It describes the feelings of the conscripts, their training, the work they did and the living conditions. The book is easy to read and gives an insight into the working conditions in the mines.

In contrast, *The Forgotten Conscript: A History of the Bevin Boy*, by Warwick Taylor (published by Pentland Press) looks at the wider picture. It is packed full of facts, figures, documents, photographs, examples of government records, details of collieries, training centres and hostels. It also includes Parliamentary debates and references to surviving records at the PRO. In accordance with government policy, 90% of the records were destroyed in the 1950s; only records for the Midland region survive. The book has been very carefully put together and the result is an excellent and informative read.

Contributed by Linda Ferguson

[If you have come across books which have proved useful to you in your research, but that you do not think are widely known, please send in a paragraph with the details, as above. Include as much publication detail as you can, to allow interested readers to obtain copies for themselves. Ed]

Postal Book Service

Please note the following amendments and additions to the list published in the June 1996 journal. Refer to that item for details of how to obtain these books.

	Price/£	P&P/£	Total/£
Looking Back on Hounslow High Street	4.60	0.70	5.30
A History of Ashford (Middx)	3.00	0.50	3.50
Stamford Brook – An Affectionate Portrait		Out of Print	
Recollections of Uxbridge		Out of Print	
Soapsud Island		Out of Print	
Stanwell – My Village		Out of Print	
Directory of Acton Laundries		Out of Print	
Thornycroft – Shipbuilding in Chiswick		Out of Print	
Brentford and Chiswick – As It Was		Out of Print	

Ancestral Research

1851 Census, Berkshire - Vol. 7. Bradfield
St John the Baptist, Hillingdon Parish Registers - Baptisms 1861-1909
St John the Baptist, Hillingdon Parish Registers - Marriages 1867-1910
St John the Baptist, Hillingdon Parish Registers - Burials Churchyard 1855-1948
St John the Baptist, Hillingdon Parish Registers - Burials Cemetery 1867-1903
Basic Facts about Family History Research in Yorkshire - P.M. Litton
Basic Approach to Latin for Family Historians - M. Gandy
Basic Facts about Sources for Family History in the Home - I. Swinnerton
Basic Approach to Keeping your Family Records - I. Swinnerton
Basic Facts about Using Marriage Records for Family Historians - P.M. Litton, with C.R. Chapman
The Protestation Returns 1641-42 and other contemporary listings - J. Gibson and A. Dell
Cheshire -. A Genealogical Bibliography, Vol. 1 Cheshire Genealogical Sources - S.A. Raymond
Cheshire - A Genealogical Bibliography, Vol. 2 Cheshire Family Histories and Pedigrees - S.A. Raymond
Quarter Sessions Records for Family Historians - A Select List (4th ed.) - J. Gibson
Was your Grandfather a Railwayman? (3rd ed.) - T. Richards
Dating Old Photographs (2nd ed.) R. Pots
Lancashire - A Genealogical Bibliography, Vol. 2 Registers, Inscriptions and Wills - S.A. Raymond
Lancashire - A Genealogical Bibliography, Vol. 3 Lancashire Family Histories and Pedigrees - S.A. Raymond
Record Offices - How to find them (7th ed.) - J. Gibson and P. Peskitt
An introduction to Using Newspapers and Periodicals - C.R. Chapman
English Genealogy - A Bibliography (3rd ed.) - S.A. Raymond
Marriage, Census and other Indexes for Family Historians (6th ed.) - J. Gibson and E. Hampson
The Hearth Tax, other later Stuart Tax Lists and the Association Oath Rolls (2nd ed.) - J. Gibson
Discovering Old Handwriting - J. Barrett and D. Iredale
St George's Boys' School, Brentford: Great European War
Fylingdales 1841 - An Analysis of Census Returns
Norfolk Pedigrees, Part 5. (Donated)
An Index to Norwich City Officers 1453-1835 (Donated)
Norwich Archdeaconry Marriage Licence Bonds 1813-1837 (Donated)
East Norfolk Poll and Register 1835 (Donated)

Acton People 1700-1900 A T. and A. Harper-Smith
Acton People No. 4 - T. and A. Harper-Smith
The Surnames of Wales J. and S. Rowlands
Researching Military Ancestors - some useful organisations
Hanworth Hearth Tax 1664 (Donated)
Genealogical Research Directory, National and International 1996
Hillingdon Boys' National School - Extracts from School Log Book, May 1895 to December 1927 (Donated)
Hillingdon Council School (Junior Mixed Dept.) - Extracts from School Log Book, April 1938 to July 1945 (Donated)
Hillingdon Council School (Mixed Dept.) - Extracts from School Log Book, January 1928 to March 1938 (Donated)
Hatred Pursued Beyond the Grave - J. Cox
Genealogical Advertiser - M. Southwick
Family History Monthly (7 volumes) (Donated)
Yorkshire Family Historian - Index 1973-1992 (Fiche)
British Isles Genealogical Register 1994. Address List for Surrey (Fiche)
Kent FHS's Microfiche Publications - List and Index 1993

Local History

Thames Valley Papists. From Reformation to Emancipation 1534-1839 - T. Hadland
Mershamania - A collection of gossip, curious facts etc., concerning the village of Mersham, Kent, over the past 1400 years
Notes on Local History - Richmond-upon-Thames and District
Isleworth - M. and K. Brown
Middlesex County Life (8 volumes) (Donated)
Peace for our Time? More World War II Memories of Backwell, Nailsea, Tickenham and Wraxall - P. Wright
The Street Names of Hanwell (Donated)
Life in England 1550-1950 - H. Bayley
The History of the Great West Road - J. Marshall
The Pinn - Pinner Local History Society
A Prospect of Richmond - J. Dunbar

From Hillingdon Parish Burial Register

27 June 1863; A man generally known by the name of Joey (having 12 toes) who was found drowned in a dock by Rigby's Brickfield near Dawley. Abode - Harlington or in a boat. Age - about 27 years.
Noted by Mavis Sibley

Journal Deadline

Contributions for the March issue should reach the Editor by 11 January 1997.

NEW MEMBERS

The Society welcomes all new members. The list below includes those from whom surname interest forms had been received at the time this issue of the Journal was prepared. The interests themselves are listed opposite.

- A53 Mr and Mrs N.R. Arnold, 21a High Street, Sherington, Newport Pagnell, Bucks. MK16 9NU
B174 Mr J.C. Birt, 18 St Bernards Road, Slough, Berks. SL3 7NT
B177 Lt. I.F. Bullock, Royal Yacht Squadron, PO Box 2769, Ruwi, PC112, Sultanate of Oman
C144 Mrs F.M.P. Clifford, Hydon House, Little Edge, Eyam, Sheffield S30 1RN
D75 Mrs J. Drew, 19 Gassons Road, Snodland, Kent ME6 5RW
D79 Dr C.J.S. Davies, Seasons, Garden Field Lane, Berkhamsted, Herts HP4 2NN
F61 Ms S. Ferrar, 11 Harris Close, Hounslow, Middlesex TW3 4JU
H146 Miss K.J. Heath, 37 Hillside Gardens, Berkhamsted, Herts HP4 2LF
J41 Mrs S.M. Jewell, 10 Target Close, Bedfont, Middlesex TW14 9TF
M121 Mr D.J. Metcalfe, PO Box 539, Ladysmith, British Columbia, Canada V0R 2E0
M123 Mr B.T. Mullally, 52 Cooper Court, Cobourg, Ontario, Canada K9A 5K4
M125 Mr G.W. Morrison, 12 St Michael's Road, Broxbourne, Herts EN10 7JL
S142 Mrs D.H. Smith, 11 Rowland Hill House, Feltham Hill Road, Ashford, Middlesex TW15 2DT
S147 Mr A. Saville, 30 Abbey Road, Malvern, Worcs. WR14 3HD
V10 Mr D. Vincent, Candles, Kirkgate, Tydd St Giles, Cambs PE13 5LB
W120 Mrs J.M. Webb, 37 Southern Cottages, Spout Lane, Stanwell Moor, Staines, Middlesex TW19 6AG

Please note the following changes of address:

- B143 Miss A. Barber, Torr Barn, Cornwood, Ivybridge, Devon PL21 9RB
C107 Mr D.R. Childs, 13 Airship Road, Cranwell, Sleaford, Lincs. NG34 8RW
C139 Mr. R.D. Cotton, 23 St Piran's Close, St Austell, Cornwall PL25 3TF
C143 Mrs P.D. Collins, 38 Wolsey Way, Chessington, Surrey
D38 Mrs N. Davis, Aultmore Cottage, Bayhall Road, Tunbridge Wells, Kent TN2 4UB
D58 Mrs M. Dyson, Braeside, Whitehough, Chinley, High Peak, Derbyshire SK23 6EJ
O11 T.J. Owen, Brownhill Cottage, Coach and Horses Lane, Danehill, Nr Haywards Heath, Sussex RH17 7JF
S28 Mrs S. Smith, Oakbourne, Uplands Road, Denmead, Hampshire PO7 6HE
S140 Mr G. Samuels, 150 Wheatlands, Heston, Middlesex TW5 0SB

Reminder New members are reminded that the content of each issue of this journal is finalised several weeks before it is ready for distribution. If you have recently submitted your interests form, it may not necessarily appear in the next journal that you receive - please be patient. I would also like to re-emphasise that the listing above includes only the names of new members who have submitted surname interests for publication; it is therefore not a comprehensive list of new members.

Richard Chapman

SURNAME INTERESTS

The table opposite gives surname interests for the new members listed above. The format should be self-explanatory. Note that the Chapman County Codes are used for entries in the 'Counties' column, with the addition of 'ALL.' indicating that all counties are of interest. Remember to include a SAE with any enquiry if you expect to receive a reply

Surname	Dates	Place	County	Member
ALEXANDER	bef 1903	Over Monnow	MON	J41
ALLEN	19 C	South Northants	NTH	A53
ANDREWS	18-19 C	Hackney	MDX	S147
	19 C	Bedfont	MDX	S147
ARNOLD	All	Hillingdon area	MDX	A53
ASHBY	1760-1840	London	MDX	D79
	c 1830	Derbyshire	DBY	D79
ASHLEY	c 1880	Fulham	MDX	W120
BARNET	1680-1750	Harrow	MDX	H146
BAWCUTT	c 1850	Crayford, Dartford	KEN	W120
BELCHER	18-20 C	London area	LND	M125
BESANT	bef 1900	Hampton area	MDX	V10
BIRT	1790-1830	Southwark	SRV	B174
	1820-1900	Wimbledon	SRV	B174
BODIMEAD	aft 1750	Harrow	MDX	H146
BRACHER	bef 1900	Hampton area	MDX	V10
BRISTER	All	Whitton area	MDX	B177
	All	Hounslow area	MDX	B177
BROAD	c 1870	West Brompton	MDX	H146
BROWN	18-19 C	Great Snoring area	NFK	F61
BULLOCK	All	Hounslow area	MDX	B177
	20 C	Fulham area	MDX	B177
BURGOINE	bef 1900	Hampton area	MDX	V10
	bef 1900	Wandsworth area	SRV	V10
CAMBER	c 1700	Cowley	MDX	H146
CHANNON	1820-90	Kensington area	MDX	M123
CLAYTON	aft 1883	Kingston Upon Hull	ERY	B177
	1800-60	St Luke Old Street area	MDX	S142
COLQUHOUN	c 1860	Lambeth	SRV	W120
CURLING	1800-30	Deptford	KEN	H146
DAPHNE	19 C	Ealing	MDX	S147
DAVI(E)S	aft 1885	Fulham	MDX	D79
DAVIES	bef 1820	Poplar area	MDX	D79
DUKE	19 C	Lymminster area	SSX	S147
EDINGTON	c 1870	Chelsea	MDX	H146
FERRAR	18-19 C	Stamford	LIN	F61
FEWELL	c 1850	High Roothing	ESS	S147
FRANKLIN	20 C	Fulham area	MDX	B177
GOULDWIN	c 1660	Burnham	BKM	H146
GRACE	19 C	Hillingdon area	MDX	A53

Surname	Dates	Place	County	Member
GRAY	17-18 C	Titchmarsh area	NTH	F61
GRIFFITHS	1850-1940	Marylebone, N. Kensington	MDX	S142
	bef 1900	Kingston area	SRY	V10
GRINELL	18-19 C	Great Milton	OXF	M125
	19 C	St Pancras	MDX	M125
HAINES	bef 1925	Richmond	SRY	V10
HAMBLIN	1900-50	N. Kensington	MDX	S142
HAMILTON	1800-60	Sunninghill area	BRK	S142
	aft 1850	Marylebone, N. Kensington	MDX	S142
HAMMERTON	1800-60	Sunninghill area	BRK	S142
	aft 1850	Marylebone, N. Kensington	MDX	S142
HARVEY-KING	c 1874	Chelsea	MDX	S142
HEARN	19 C	Chesham area	BKM	A53
HEATH	aft 1800	Southampton	HAM	H146
HILLIARD	c 1840	Camden Town	MDX	H146
HINTON	18-20 C	London area	LND	M125
HOLMES	19 C	Ilfracombe	DEV	C144
	19 C	Harlington	MDX	C144
IRONS	19 C	Hillingdon area	MDX	A53
IVE	aft 1690	Harefield	MDX	H146
JACKSON	1700-1870	Albury	HRT	S147
	aft 1870	Kilburn area	MDX	S147
JANES	18-19 C	Street area	SOM	B177
JARVIS	c 1850	Crayford, Dartford	KEN	W120
JEWELL	bef 1906	Chelsea	MDX	J41
JONES	aft 1885	Fulham	MDX	D79
JUDD	19 C	Hammersmith	MDX	S147
KING	18-19 C	Fakenham area	NFK	F61
	1825-80	Clerkenwell, Chelsea, Kensington	MDX	S142
KING-TATE	1900-30	Parliament Street	MDX	S142
LAPPIN	20 C	Fulham area	MDX	B177
LOVEGROVE	18-19 C	East Challow	OXF	M125
	19 C	London area	MDX	M125
MANN	c 1857	St Mark, Clerkenwell	MDX	S142
MATTINELEY	19 C	Hillingdon area	MDX	A53
MAY	19 C	Fulham	MDX	D75
	bef 1930	Wimbledon	SRY	D75
McLAGAN	19 C	All	ALL	A53
METCALFE	All	Kensington	MDX	M121
	All	Chelsea	MDX	M121
MILLER	19-20 C	London area	LND	M125
	aft 1800	Ixworth	SFK	S142
MOORE	19 C	Moulsoe	BKM	S147
MORGAN	1900-60	Camden Town	MDX	S142
MORRISON	19 C	Kensington area	MDX	M125
MULLALLY	1850-90	Kensington area	MDX	M123
NAGLE	c 1890	Fulham	MDX	W120
NASS	19 C	Cranford	MDX	C144
NEAL	19 C	South Northants	NTH	A53
OGBURNE	18 C	Hillingdon area	MDX	H146

Surname	Dates	Place	County	Member
PALMER	bef 1830	Street area	SOM	B177
PEARCE	c 1900	Camberwell	SRY	W120
PERCIFULL	19 C	North Crawley	BKM	S147
PETVIN	All	All	ALL	B177
PHILLIPS	c 1850	Crayford, Dartford	KEN	W120
POLLARD	1837-1920	Pentonville, Chelsea, Kensington	MDX	S142
	1820-40	ixworth	SFK	S142
	c 1851	West Drayton	MDX	S142
POULTER	18-19 C	Hinxton	CAM	M125
POWTER	19 C	West Ham	ESS	M125
QUAITE	19 C	Moulsoe	BKM	S147
RUSSEL	c 1860	Lambeth	SRY	W120
SAVILLE	1650-1900	Manchester area	LAN	S147
	1800-1930	Sheffield area	YKS	S147
SCARBROW	c 1840	Westminster	MDX	H146
SEVILLE	1650-1900	Manchester area	LAN	S147
	1800-1930	Sheffield area	YKS	S147
SEYMOUR	c 1730	Cowley	MDX	H146
SHEPHERD	18-19 C	Hillingdon area	MDX	M125
	19 C	St Pancras	MDX	M125
SKIPSEY	18-19 C	Paris, France		B174
	18 C	London	LND	B174
	18-19 C	Westminster	MDX	B174
	1840-1920	St Marylebone	MDX	B174
	1860-1900	Pimlico	MDX	B174
	1870-1920	Fulham	MDX	B174
SLOW	c 1820	Pinner	MDX	H146
SMALE	c 1860	Bermondsey	SRY	W120
SMITH	aft 1875	Hatton	MDX	C144
SMITHSON	19 C	London area	MDX	M125
SNELLING	bef 1800	Angmering	SSX	S147
SPICKETT	18-20 C	London area	LND	M125
SPILLSBURY	1760-1810	London	MDX	D79
STEVENS	c 1860	Bermondsey	SRY	W120
STRUTT	1730-90	Westminster	MDX	B174
VASS	19 C	Cranford	MDX	C144
VINCENT	bef 1900	Hampton area	MDX	V10
VULLIAMY	bef 1820	Poplar area	MDX	D79
WALKER	1900-50	N. Kensington	MDX	S142
WALSH	20 C	Kingston Upon Hull	ERY	B177
WEBB	c 1850	Crayford, Dartford	KEN	W120
WESTON	c 1850	Wandsworth	SRY	H146
WHEATLEY	19 C	Chelsea, Fulham	MDX	C144
WIGGINS	All	Hillingdon area	MDX	A53
WILSON	18-19 C	Bidston	CHS	M125
WINSTANLEY	bef 1914	Shepherds Bush	MDX	V10
WOODWARD	18-19 C	Easton-on-the-Hill	NTH	F61
WOOLVEN	1750-1900	Lyminster area	SSX	S147

INDEXES HELD BY MEMBERS

These indexes are intended as aids to research in the West Middlesex area. For members of the Society fees are as stated (please quote membership number); for non-members they are twice what is indicated below, except where specified. Please note that all enquirers must include a SAE (or IRC). Unless stated otherwise, cheques should be made payable to the holder of the index, **not** the WMFHS.

West Middlesex Marriage Index contains only marriages taking place before civil registration (1837): about 65,500 entries, mainly from West Middlesex.

Rates as follows:

A List indicating coverage - SAE plus a second class stamp.

A search for one specific marriage – SAE plus 50p (non-members £1)

Up to 20 entries of one surname – SAE plus £1 (non-members £2)

Cheques should be made payable to WMFHS, in Sterling only. Name variants required need to be listed by the enquirer. Give name(s), approximate date and parish or area if known. Include your membership number.

Mrs J.M. Huckle, 19 Rectory Green, Halesworth, Suffolk IP19 8AN

West Middlesex Strays People from or born in our area found in another area. Enquiries £1.00.

Miss Juliana Powney, 14 Hollies Road, London W5 4UU

Monumental Inscriptions: Acton, Ashford, Cranford, Chiswick, Ealing, Feltham, Fulham (recorded 100 years ago), Hampton, Harlington, Hayes, Heston, Hillingdon, Hounslow (United Reformed), Norwood Green, Perivale, Staines, Teddington, Twickenham and Uxbridge. Enquiries: free for members, £1.00 for non-members.

Mrs Wendy Mott, 24 Addison Avenue, Hounslow TW3 4AP

1881 Census Indexes For fee of £1.00 plus SAE (at least 9"x4") any one county searched for any one surname. Fee will cover the supply of up to four photocopies of the entries found. Cheques payable to Mrs Margaret Harnden.

Mrs Jill Munson, 41 Trotsworth Avenue, Virginia Water, Surrey GU25 4AN

Chiswick Census 1801 Head of household plus numbers of males and females; additional information in some cases.

Mrs R. Ward, 29 Ernest Gardens, Chiswick, London W4

West Middlesex Settlement Records New Brentford, Uxbridge, Staines, Ealing, Feltham, Friern Barnet, Fulham, Hammersmith, Hanwell, Chelsea. Enquiries £1.00.

Miss J. Zouch, 132 Larch Crescent, Yeading, Hayes, Middlesex

Divorce Index An index to divorces reported in *The Times* 1785-1910. Indexed by surname of principal parties, surname of co-respondent(s), and alias(es). Enquiries members free (SAE or IRC and please quote membership no); non-members: £1.50 (UK), A\$4, NZ\$5, inc. postage. Also available on fiche at £8.00 (UK), A\$22. NZ\$26, inc. airmail postage worldwide.

Mrs. Annie Weare, PO Box 3021, Bassendean 6054, Western Australia.

New Brentford St Lawrence Registers Baptisms, marriages and burials 1617-1720/21. Enquiries £1.00

Miss J. Zouch, 132 Larch Crescent, Yeading, Hayes, Middlesex.

Hayes St Mary's Parish Registers Baptisms, marriages, burials 1557-1840. Enquiries £1 per surname

Mrs M. Sibley, 13 Blosson Way, West Drayton, Middlesex UB7 9HF.

Hillingdon Parish Registers Baptisms 1559-1909, marriages 1559-1910, burials 1559-1948 (churchyard) and 1867-1903 (cemetery). Enquiries £1.

Mrs M. Sibley, 13 Blosson Way, West Drayton, Middlesex UB7 9HF.

Harlington Parish Registers Baptisms, marriages, burials 1540-1850. Enquiries £0.50.

Mr P. Sherwood, 5 Victoria Lane, Harlington, Middlesex UB3 SEW

Isleworth All Saints Parish Registers Baptisms 1808-1854, marriages 1754-1895, burials 1813-1879. Poor Law Examinations 1777-1801, 1813-1830. Enquiries £1.00, or \$5 US/Canada.

Mr A. Powell, 71 Whiteside Road, Brentford, Middlesex

Chiswick Marriages Around 800 marriages October 1678- December 1800. Enquiries, giving approximate date, £100.

Mr A. Powell, 71 Whiteside Road, Brentford, Middlesex

Harmondsworth Parish Registers Baptisms, marriages and burials 1670-1837. Enquiries £1.00, or 3 IRCs per name.

Mrs Wendy Mott, 24 Addison Avenue, Hounslow TW3 4AP

Feltham Index An expanding collection of transcripts and indexes relating to the parish of Feltham. Enquiries free, on receipt of a SAE. Further contributions also welcome.

Mr P. Watson, 22 Bedfont Road, Feltham, Middlesex TW13 4LT

Teddington Index A growing database of material relating to Teddington and its inhabitants. Enquiries free to WMFHS members, on receipt of a SAE. Additional sources welcome.

Mr D. Neller, 8 Elleray Road, Teddington, Middlesex TW11 0HG

Coastguard Index All enquiries £5.00 per name.

Mrs E. Stage, 150 Fulwell Park Avenue, Twickenham, Middlesex

West Middlesex Family History Society

Area of Interest

Acton, Ashford, East Bedfont, Chelsea, Chiswick, Cowley, Cranford, West Drayton, Ealing with Old Brentford, Feltham, Fulham, Hampton, Hanwell with New Brentford, Hanworth, Harlington, Harmondsworth, Hayes with Norwood, Hammersmith, Heston, Hillingdon, Hounslow, Isleworth, Kensington, Laleham, Littleton, Shepperton, Staines, Stanwell, Sunbury, Teddington, Twickenham and Uxbridge.

If undelivered, return to: West Middlesex FHS, c/o P. Roe, 171 Fernside Avenue,
Feltham, Middlesex TW13 7BQ